

# Secure your care

## Samsung Healthcare Cybersecurity

### Bringing peace of mind to your hospital and patients

To address this emerging need for cybersecurity, Samsung provides a solution to support our customers by offering the tools to protect against cyberthreats that may compromise invaluable patient data and ultimately degrade the quality of care. Samsung's Cybersecurity Solution strives to abide by the CIA triad (Confidentiality, Integrity, and Availability) and takes a comprehensive approach to providing impeccable protection with the following pillars: Intrusion prevention, Access control, and Data protection.



#### Intrusion prevention

Tools for protecting against cyber threats from external attacks

- Security tools include Anti-virus & Firewall
- Secured operating system



#### Access control

Strengthened surveillance for tracking the access of patient information

- Account management
- Enhanced audit trail



#### Data protection

Encryption functions for safeguarding data whether at-rest or in-transit

- Data protection
- Transmission security

#### About Samsung Medison CO., LTD.

Samsung Medison, an affiliate of Samsung Electronics, is a global medical company founded in 1985. With a mission to bring health and well-being to people's lives, the company manufactures diagnostic ultrasound systems around the world across various medical fields. Samsung Medison has commercialized the Live 3D technology in 2001 and since being part of Samsung Electronics in 2011, it is integrating IT, image processing, semiconductor and communication technologies into ultrasound devices for efficient and confident diagnosis.

- This product, features, options and transducers are not commercially available in all countries.
  - Due to regulatory reasons their future availability cannot be guaranteed. Please contact your local sales network for further details.
  - This product is a medical device, please read the user manual carefully before use.
1. Optional feature which may require additional purchase.
  2. S-Detect™ for Breast and S-Detect™ for Thyroid are not available in Canada. In the United States, the Margin, Posterior Features, and Echo Pattern, the classification items of S-Detect for Breast are manual, thus these classification items are not automatically provided. Also the recommendations about whether results are benign or malignant in S-Detect™ are not applicable in the United States.
  3. Strain value for ElastoScan+™ is not applicable in Canada and the United States.
  4. All clinical images on this catalog are acquired by the RS85 V1.0 ultrasound system.
  5. S-Vue Transducer™ is not the name of a function, but is the name of Samsung's advanced transducer technology.



Scan code or visit  
[www.samsunghealthcare.com](http://www.samsunghealthcare.com)  
to learn more

#### SAMSUNG MEDISON CO., LTD.

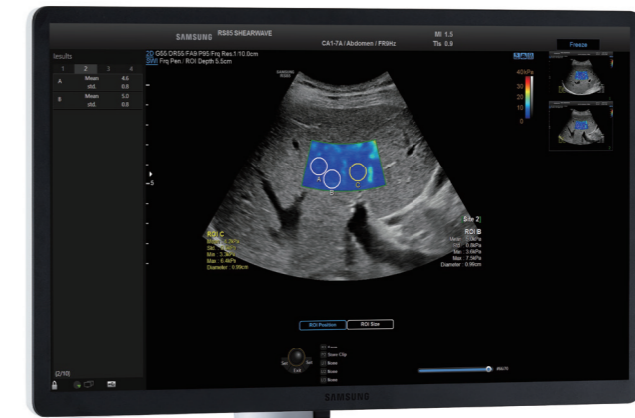
© 2021 Samsung Medison All Rights Reserved.  
Samsung Medison reserves the right to modify the design, packaging, specifications, and features shown herein, without prior notice or obligation.

Relentless Innovation  
for your diagnostic confidence

SAMSUNG

# RS80 EVO

## EXCEPTIONAL CONFIDENCE



CT-RS80 EVO V1.02\_IMC\_211224-EN

CE 0123

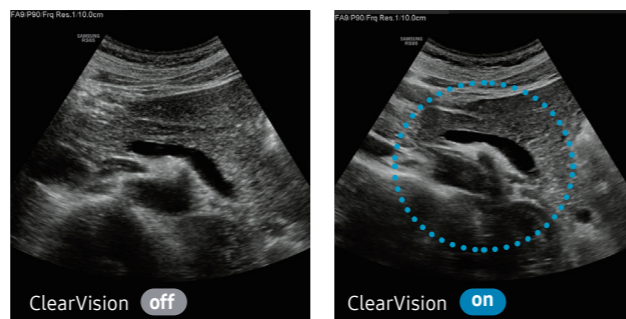
# Exquisite Image Quality



Samsung's image enhancing and artifact suppressing technologies provide clear, detailed imaging that you can count on to help improve diagnostic confidence and imaging continuity as well as its expert tools offer new perspectives and provide additional information for confident decision making.

## ClearVision

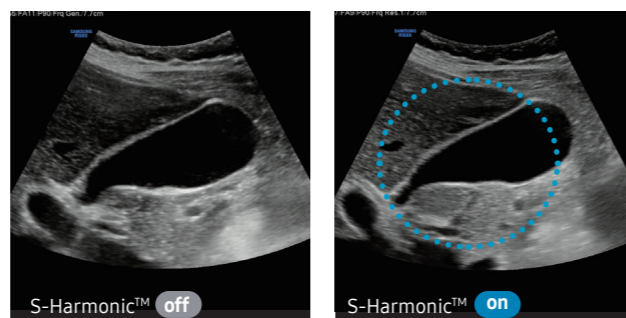
The noise reduction filter improves edge enhancement and creates sharper 2D images for optimal diagnostic performance. In addition, ClearVision provides application-specific optimization and advanced temporal resolution in live scan mode.



Pancreas

## S-Harmonic™

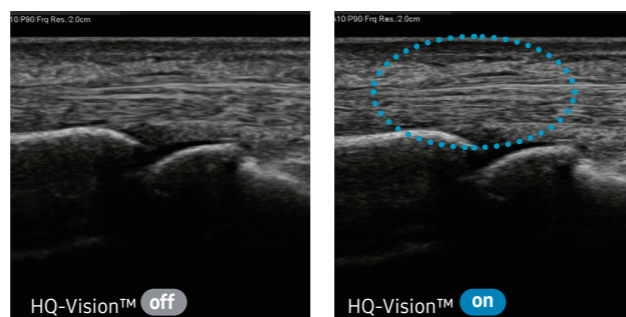
S-Harmonic™ mitigates the signal noise, enhances contrast, and provides uniform image performance of overall image area from near-to-far.



Gallbladder

## HQ-Vision™

HQ-Vision™ provides clearer images by mitigating the characteristics of ultrasound images that are slightly blurred than the actual vision.



Finger

## S-Flow™

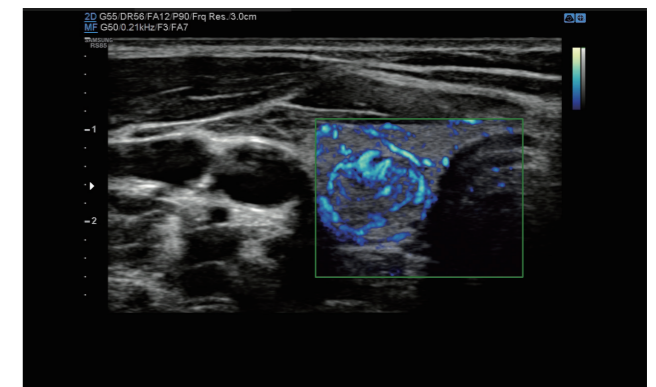
The function uses directional power doppler technology, enabling you to examine even the peripheral vessels. It displays information on the intensity and direction of blood flow. DPDI Mode: When it is selected, the PRF value is displayed on the color bar.



Kidney with MV-Flow™

## MV-Flow™ 1

MV-Flow™ visualizes microcirculatory and slow blood flow to display the intensity of blood flow in color. It is suitable for observation of microcirculatory blood flow and volume of slow blood flow.



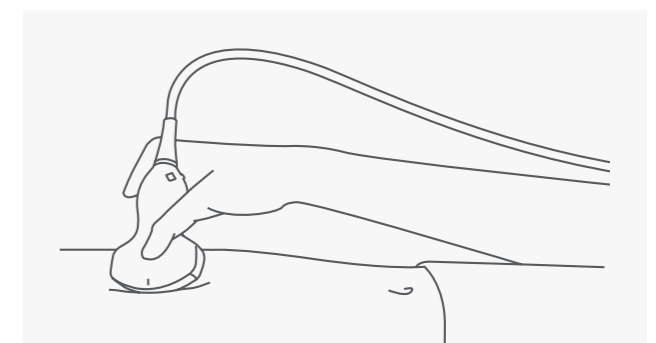
Thyroid with MV-Flow™

## LumiFlow™ 1

LumiFlow™ is a function that visualizes blood flow in three dimensional-like to help understand the structure of blood flow and small vessels intuitively.

## S-Fusion™ 1

S-Fusion™ enables simultaneous localization of a lesion using real-time ultrasound in conjunction with other volumetric imaging modalities. Samsung's Auto Registration helps quickly and precisely fuse the images, increasing efficiency and reducing procedure time. S-Fusion™ enables precise targeting during interventional and other advanced clinical procedures.



## Positioning Auto

Positioning Auto helps quick and efficient examination with one-step initial registration between CT/MR and ultrasound images by positioning the transducer in the patient's pit of the stomach before patient scan.

## S-Fusion™ for Prostate

S-Fusion™ for Prostate allows safe navigation and precise targeting during prostate biopsies based on 3D models created from MR data sets, and also provides a function to report biopsy location.

## CEUS+ 1

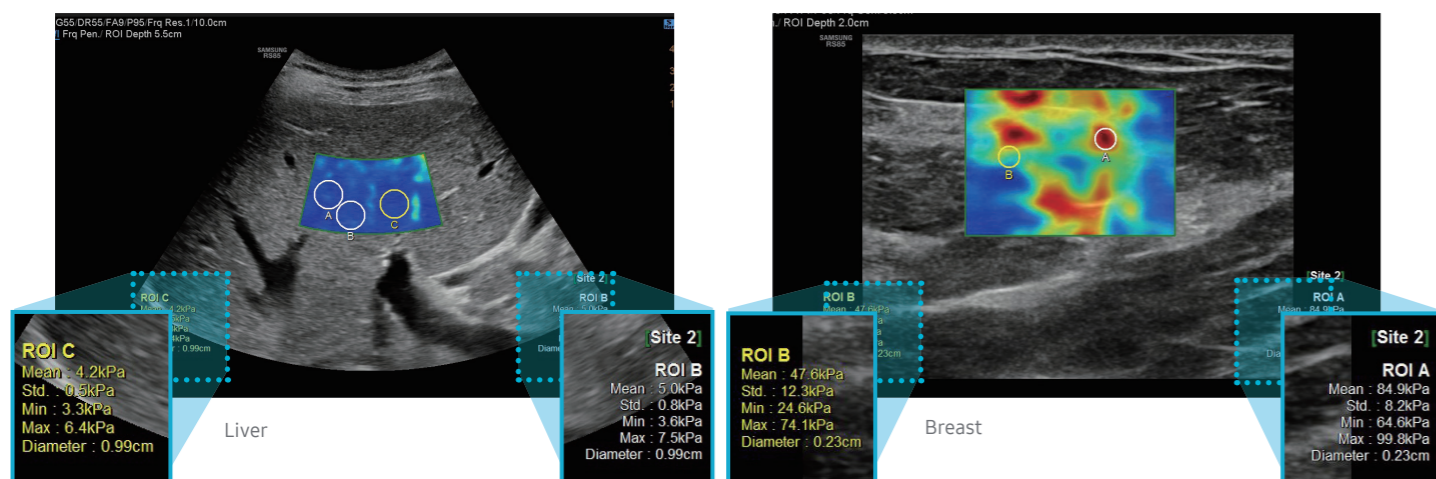
CEUS+ is a contrast enhancement imaging technology that utilizes the characteristics of ultrasound contrast agents. The microbubble contrast agent injected into the body through the vein or alike is subjected to perform nonlinear resonance due to stimulation of ultrasound energy. In addition to the nonlinear signal generated by this method, the ultrasound contrast image is implemented by using the harmonic signal and thus utilized for the diagnosis based on the contrast characteristics over time.

# Increased Consistency

With its advanced intelligent solutions, including an extensive range of quantification functions, RS80 EVO provides measurement consistency while reducing variability between users.

## S-Shearwave Imaging™ 1

S-Shearwave Imaging™ allows for non-invasive assessment of the stiffness of tissue/lesions in various applications such as breast, liver, and MSK. The color-coded elastogram, quantitative measurements, dual or single display option, and user-selectable ROI functions are especially useful for the accurate diagnosis of breast and liver diseases.



## S-Detect™ 1,3

### S-Detect™ for Breast

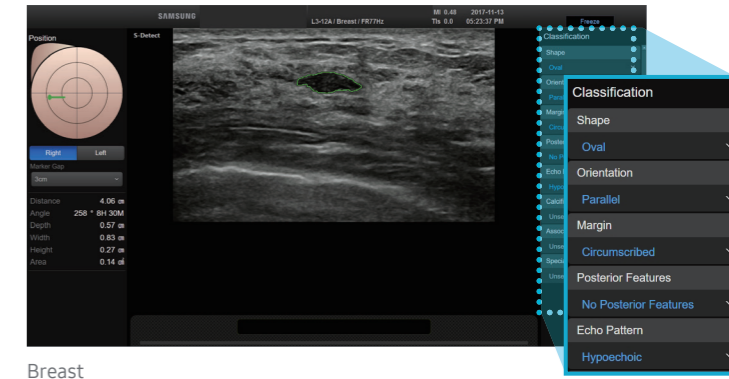
The feature, which analyzes selected lesions in the breast ultrasound study and shows the analysis data, applies BI-RADS ATLAS\* (Breast Imaging-Reporting and Data System, Atlas) to provide standardized reporting; and helps diagnosis with the streamlined workflow.

\* Registered trademark of ACR and all rights reserved by ACR.

### S-Detect™ for Thyroid

The feature, which analyzes selected lesions in the thyroid ultrasound study and shows the analysis data, provides standardized reporting based on the \*ATA, BTA, EU-TIRADS, K-TIRADS and ACR TI-RADS guidelines; and helps diagnosis with the streamlined workflow.

\* ATA: American Thyroid Association  
 BTA: British Thyroid Association  
 EU-TIRADS: European Thyroid Imaging, Reporting and Data System  
 K-TIRADS: Korean Thyroid Imaging, Reporting and Data System  
 ACR TI-RADS: American College of Radiology Thyroid Imaging, Reporting and Data System



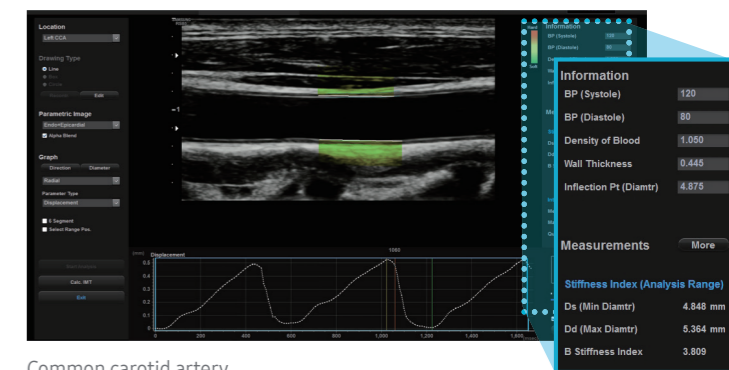
Breast



Thyroid

## ArterialAnalysis™ 1

ArterialAnalysis™ detects functional changes of vessels, providing measurement values such as the stiffness, intima-media thickness and pulse wave velocity of the common carotid artery. Since the functional changes occur before morphological changes, this technology supports the early detection of cardiovascular disease.



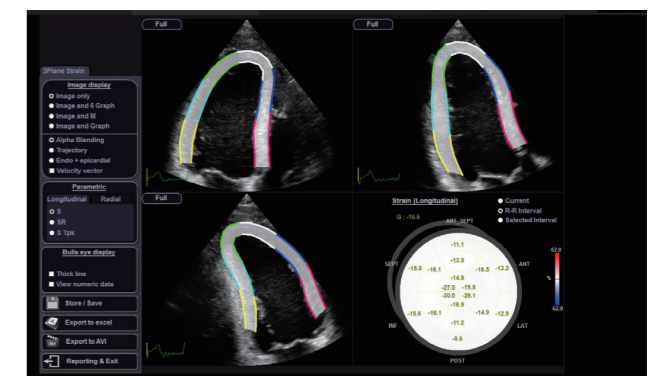
Common carotid artery

## AutoIMT+ 1

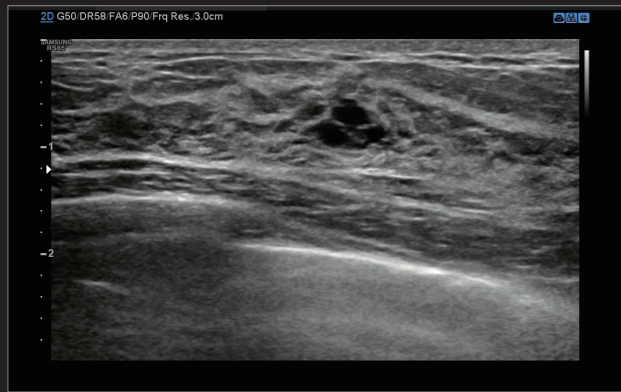
AutoIMT+ is a screening tool to analyze a patient's potential risk of cardiovascular disease. It allows easy intima-media thickness measurement of both the anterior and posterior wall of the common carotid by the click of a button.

## Strain+ 1

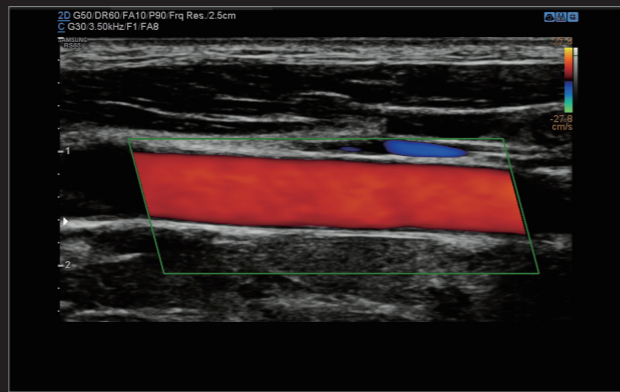
Strain+ is a quantitative tool for measuring global and segmental wall motion of the left ventricle (LV). In Strain+, three standard LV views and a Bull's Eye are displayed in a quad screen for easy and quick assessment of the LV function.



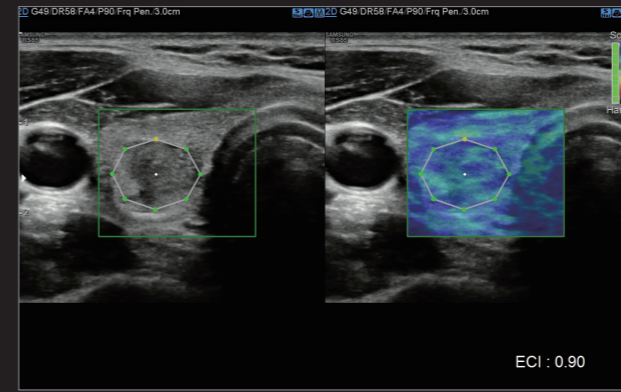
Strain+



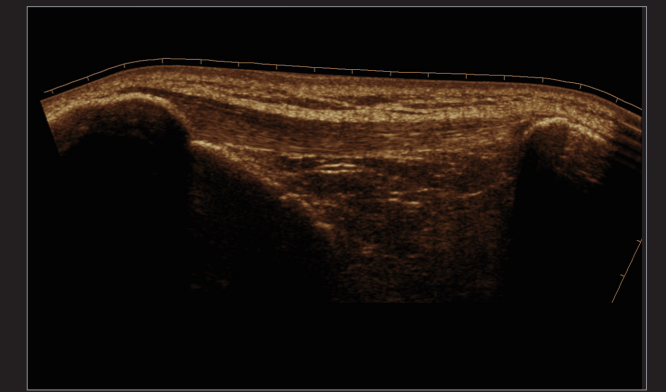
Breast mass



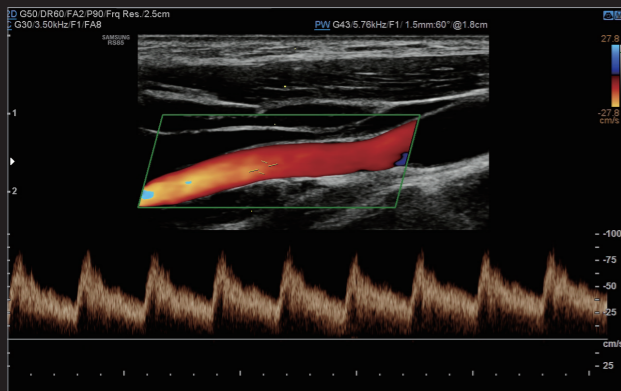
Common carotid artery



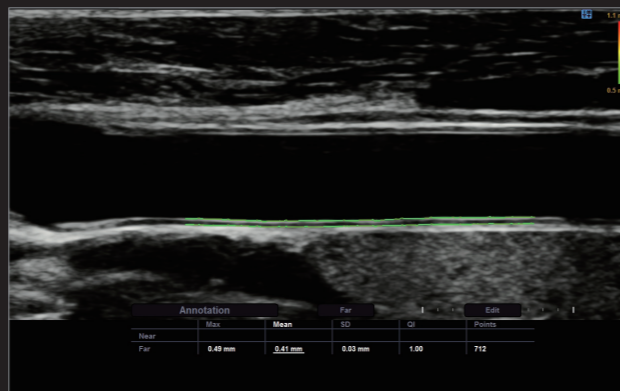
E-Thyroid™



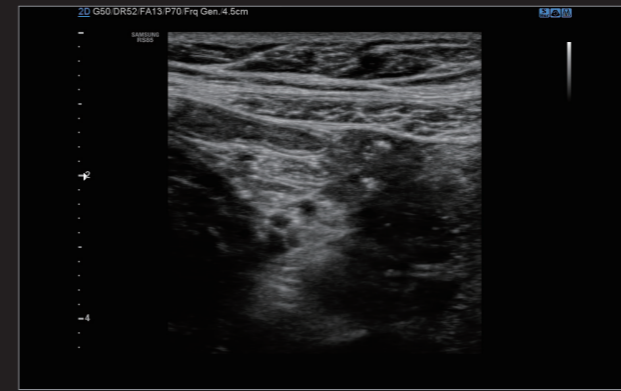
Patellar tendon with Panoramic



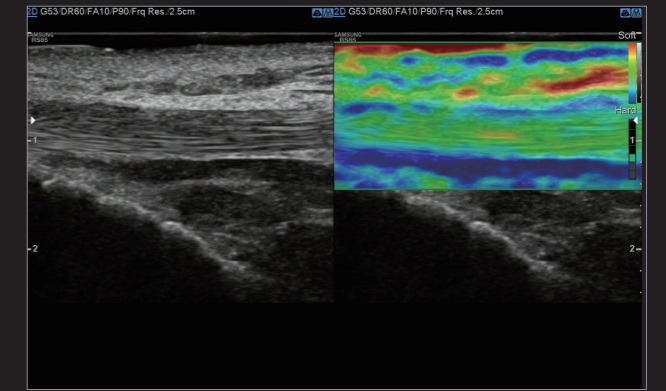
Internal carotid artery



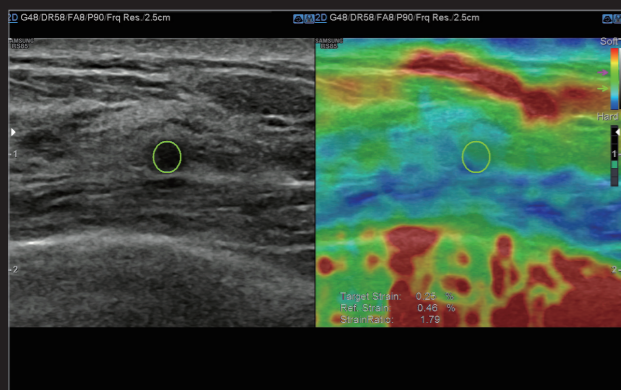
Auto IMT+



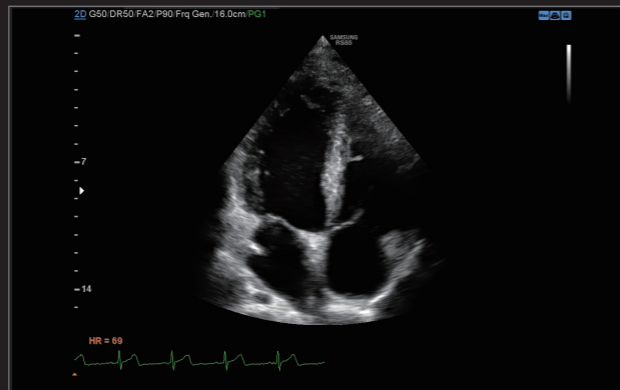
Bowel



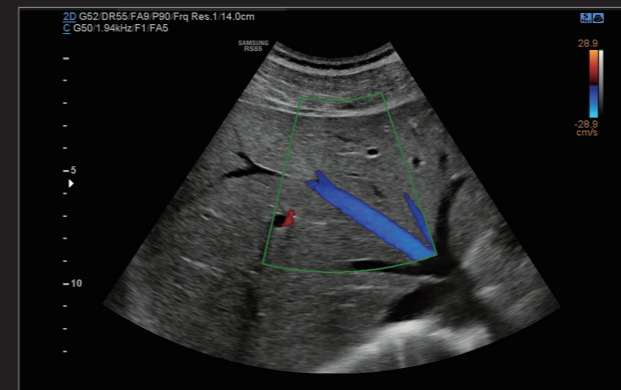
Patellar tendon with ElastoScan™ 2



E-Breast™



4 Chamber



Liver



Kidney with MV-Flow™

# Enhanced Efficiency



The RS80 EVO has been designed to streamline your workflow by enhancing efficiency through reducing keystrokes and by combining multiple actions into one.

## SonoSync<sup>1</sup>

SonoSync™ is a real-time image sharing solution that allows collaborative communication for care guide and training between doctors and sonographers. In addition, voice chatting and real-time marking function are provided for efficient communication, and the MultiVue function is included to monitor multiple ultrasound images on a single screen.

\* SonoSync™ is an image sharing solution, not a diagnostic solution.



## EzPrep™

EzPrep™ is a function that automatically selects the transducer based on the worklist inputted in the ultrasound system and sets the Preset of the selected transducer.



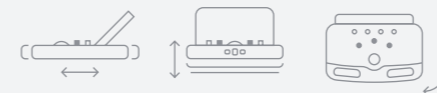
## RIS Browser

RIS Browser is a function that improves the workflow in the hospital by allowing access to RIS through the browser embedded in the system for the post process without need to move to the PC after scanning.



## Touch Customization

A customizable touchscreen interface that allows the user to move frequently used functions to the first page, keeping the focus on the patient instead of the system.



## 6-way Control Panel

The RS80 EVO's 6-way adjustable control panel optimizes your work environment to reduce repetitive motions stress. When it's in off-mode, the control panel returns to the home position, allowing for easier and enhanced mobility.



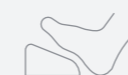
## Full Screen

In the Full Screen mode, the ultrasound examination can be performed while viewing the image/cine that is fully expanded to the entire monitor.



## 14-inch Tilting Touch Screen

Samsung's tilting touch screen can be adjusted to accommodate any user's viewing preferences within any scanning environment.



## Central Lock

A single pedal controls a central lock mechanism to conveniently secure the console in place. This results in more efficient movements while the user is performing scanning procedures.



## Maneuverable Wheel

4 swivel wheels allow easy steering, and a locking function.



# Comprehensive Selection of Transducers

## Curved array transducers



**CA1-7A**  
Abdomen, obstetrics, gynecology, pediatric, vascular, musculoskeletal

**CA3-10A**  
Abdomen, obstetrics, gynecology, pediatric, vascular, musculoskeletal

**CA2-8A**  
Abdomen, obstetrics, gynecology

**CF4-9**  
Pediatric, vascular

## Linear array transducers



**LA4-18A**  
Small parts, vascular, musculoskeletal, abdomen

**LA3-16A**  
Small parts, vascular, musculoskeletal

**LM4-15B**  
Small parts, vascular, musculoskeletal, abdomen

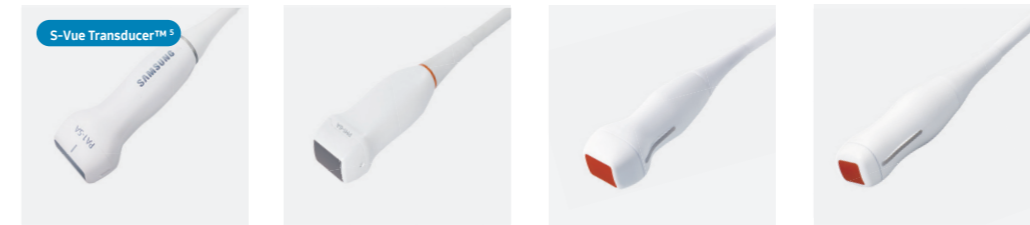
**LA2-9A**  
Small parts, vascular, musculoskeletal, abdomen

**L3-12A**  
Small parts, abdomen, vascular, musculoskeletal



**LA3-16AI**  
Musculoskeletal

## Phased array transducers



**PA1-5A**  
Cardiac, TCD, abdomen

**PM1-6A**  
Cardiac, TCD, abdomen

**PA3-8B**  
Cardiac, pediatric, abdomen

**PA4-12B**  
Cardiac, pediatric

## CW transducers



**CW6.0**  
Cardiac, vascular

**DP2B**  
Cardiac

## TEE transducer



**MMPT3-7**  
Cardiac

## Endo-cavity transducer



**EA2-11B**  
Obstetrics, gynecology, urology

**EA2-11AR\***  
Obstetrics, gynecology, urology

**EA2-11AV\***  
Obstetrics, gynecology, urology

\* **Ergonomic Transducer (EA2-11AR, EA2-11AV)**  
The new endocavity transducer supports natural grip by moving the max width point to a more forward position and also increased the length of the grip to allow balanced weight distribution.

## Volume transducers



**CV1-8A**  
Abdomen, obstetrics, gynecology

**EV3-10B**  
Obstetrics, gynecology, urology

**EV2-10A**  
Obstetrics, gynecology, urology

\* Some of the transducers may not be available in some countries.