

Samsung Medison is a global leading medical devices company. Founded in 1985, the company now sells cutting-edge medical devices including diagnostic ultrasound, digital X-ray and blood analyzer around the world. The company has attracted global attention in the medical field with its R&D capabilities and advanced technologies. In 2011, Samsung Medison became an affiliate company of Samsung Electronics, integrating its IT, image processing, semiconductor and communication technologies into medical devices.

CT-PT60A V1.01 GI-FTW-141203-EN

\* Availability of some products, features, options and transducers mentioned in this catalog may vary from country to country and is subject to varying regulatory requirements.

\* This product, features, options and transducers are not commercially available in all countries. Due to regulatory reasons their future availability cannot be guaranteed. Please contact your local sales network for further details.



Scan code or visit  
<http://www.samsungmedison.com>  
to learn more

**SAMSUNG MEDISON CO., LTD.**

© 2014-2016 Samsung Medison All Rights Reserved.  
Samsung Medison reserves the right to modify the design, packaging, specifications, and features shown herein, without prior notice or obligation.

# Compactly powerful

## Ultrasound system PT60A



**SAMSUNG**

## Compactly powerful

This compact-sized ultrasound system is engineered to meet the needs of the portable market and incorporates advanced features such as a 10.1-inch LED touch-screen and Needle Mate™ technology. With its outstanding performance, slim and compact size, and ease of use, the PT60A is designed to satisfy point-of-care applications.



\* Actual size image of PT60A



### 10.1-inch LED monitor

Equipped with the 10.1-inch LED touch-screen monitor, the PT60A displays great image quality with enhanced contrast resolution providing the optimal scanning experience.

### NeedleMate™

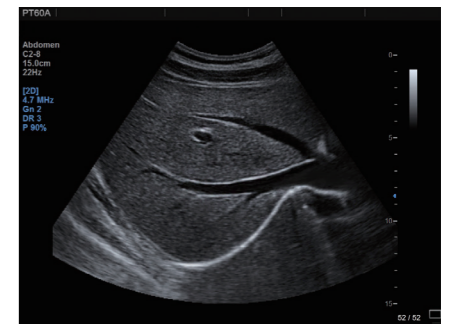
Using pinpoint precision, NeedleMate™ delineates needle location when performing interventions such as nerve blocks.

## Outstanding vision

The high level of accuracy and efficiency in diagnosis is possible with the PT60A, which features the new technologies such as a 10.1-inch LED touch-screen monitor for easy operation, NeedleMate™ for precise identification of the needles' location, and ClearVision™ providing clearer imaging with an enhanced noise reduction filter.

### ClearVision™

ClearVision™ technology virtually eliminates unwanted speckle noise, while providing great contrast resolution in combination with enhanced edge definition for better image quality. Integrating Samsung's decent imaging technology, the PT60A demonstrates a noticeable improvement in image quality.



Liver with ClearVision™

### MultiVision™

MultiVision™ incorporates intricate beam steering and compounding of scan lines to deliver enhanced spatial and contrast resolution.



Thyroid with MultiVision™

## Simple touch to save time

Using the one-touch measurement functions of the ultraportable and compact PT60A, exam results are delivered with efficiency. The PT60A's Auto IMT™ and quick diagnosis report can help providers make critical decisions more easily.

### Capacitive touch-screen

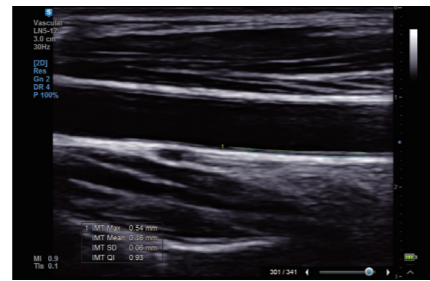
The PT60A's capacitive touch-screen is durable and supports multi-touch with faster reaction time. It also can be operated with gloves helping to improve work efficiency for ICU, operating theaters, ambulances and emergency departments.



10.1-inch touch-screen

### Auto IMT™

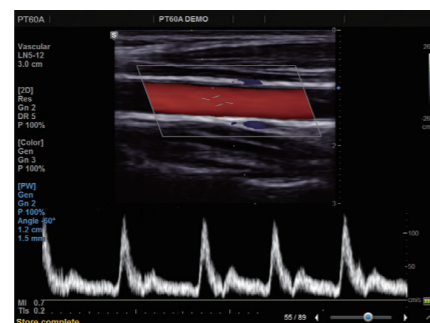
Auto IMT™ allows semi-automatic IMT measurement of both near and far walls of the CCA (Common Carotid Artery). Accurate IMT measurements have the potential to identify patients with an increased risk of stroke and heart disease.



CCA with Auto IMT™

### QuickScan™

Important imaging parameters can be quickly optimized with the touch of a button below the monitor, improving the efficiency of diagnosis workflow.



CCA Doppler with QuickScan™



The PT60A's sensitive touch-screen and intuitive user interface help sports medicine specialists quickly examine injuries with easy access to common functions. The compact size of the equipment also helps users quickly attend to the injury by enhancing their mobility during the diagnostic examination.



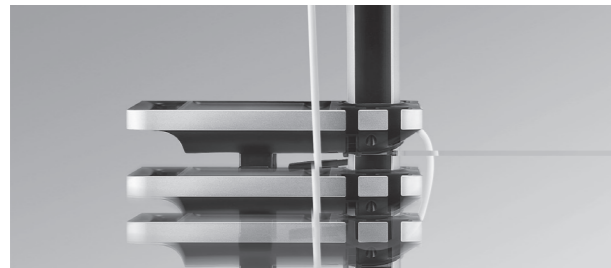
## Ergonomic delight

Mobility is an important factor for various ultrasound applications, and the PT60A does not fail to satisfy this aspect. An optional docking cart provides high portability to the system, which boasts a handy, ergonomic design for ease of use.



### Tilting monitor

The monitor holder on the PT60A cart can be easily adjusted to hold the screen at the optimal angle for its users.



### Lift table

The table offers four convenient transducer holders and can be moved up-and-down for user comfort.



### Convenient handle

The PT60A comes with a convenient handle for one-handed carrying that enables easier and faster transportation.



### Micro transducer connector

The small micro transducer connector leaves more room on the machine for efficient use of space.



### Three transducer ports

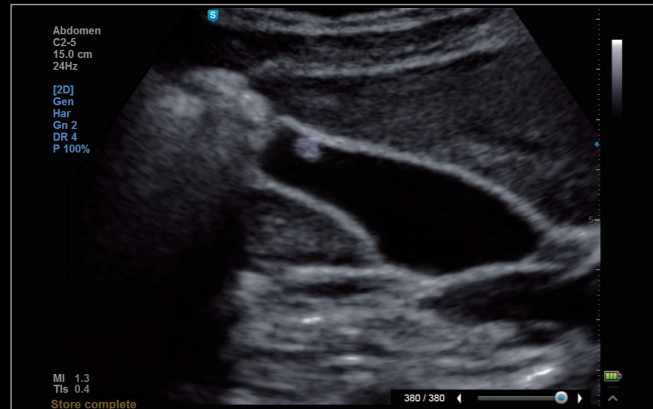
The PT60A's docking cart provides three extended active transducer ports for greater usability.



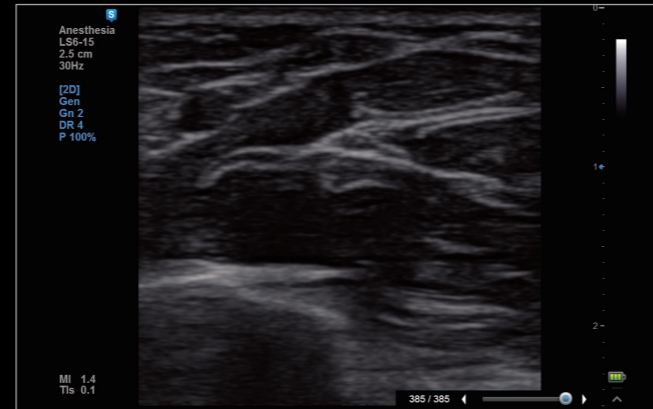
### Basket space and encased printer

The large, robust basket and encased printer support efficient use of space and provide enhanced functionality.

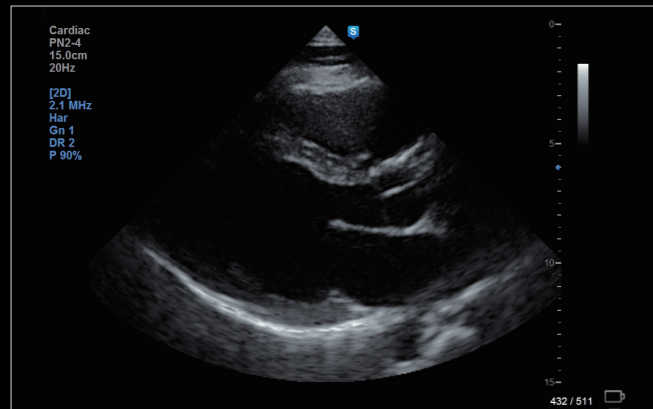
## Enhanced image quality



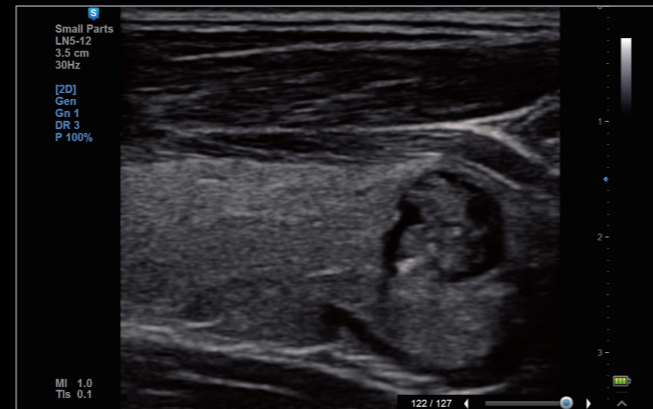
Gall Bladder polyp with zoom



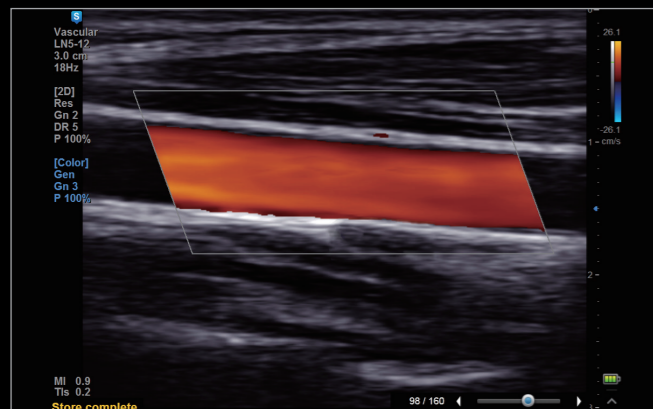
Median Nerve with MultiVision™



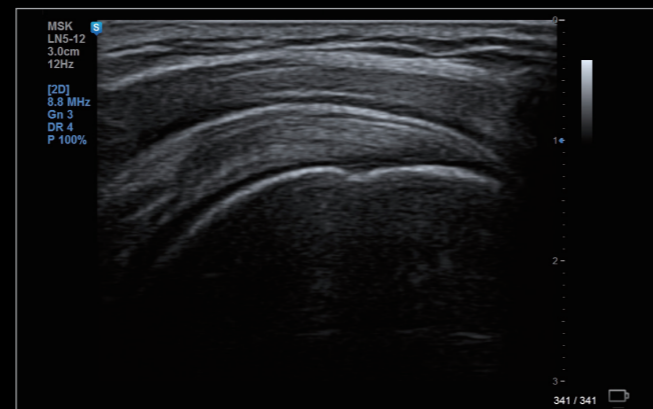
Parasternal long axis view



Thyroid nodule with ClearVision™



CCA with color Doppler



Supraspinatus tendon with MultiVision™

## A comprehensive selection of transducers

### Curved array transducers



#### C2-5

- Application : abdomen, obstetrics, gynecology



#### C2-8

- Application : abdomen, obstetrics, gynecology



#### CF4-9

- Application : abdomen, vascular, emergency, pediatric

### Linear array transducers



#### LN5-12

- Application : musculoskeletal, small parts, vascular, anesthesia



#### LS6-15

- Application : musculoskeletal, anesthesia



#### EVN4-9

- Application : obstetrics, gynecology, urology

### Phased array transducers



#### P4-12

- Application : abdomen, cardiac, vascular



#### PN2-4

- Application : abdomen, cardiac, TCD, emergency